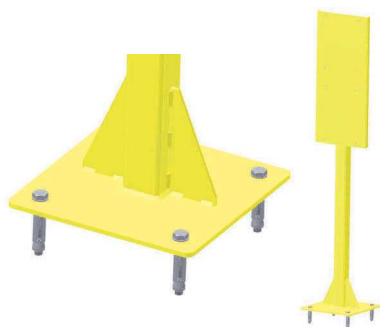


Salvo Pedestal

User Guide



The Salvo Pedestal is bolted to the floor of the yard and is used primarily for installations that have a narrow bay pitch and limited wall access and fixing space. The pedestal is used in conjunction with Salvo Control Panel and Salvo Enclosure, double box.

Specifications

Post Material	Powder Coated Carbon Steel
Height	1.46m
Weight	15kg
Colour	Safety Yellow
Mounting Hardware	4 x M10 Rawl Bolts (supplied).

Precautions



To maintain high visibility, periodically clean the pedestal. From time to time, check that all fixing screws remain tight.

Maintenance

Installation

The location of the Pedestal is affected by the position of the existing bay canopy and/or curtains. Consideration must also be given to the accidental opening of the trailer doors during movement of the trailer. (Ensure that the trailer doors cannot strike the pedestal).

Additional steelwork (uni-strut) should be used to connect the pedestal to the bay wall, thereby providing greater stability. The SCP cable can be tied to the steel work for protection and support.



Order Information

Please advise correct part number when ordering.

(mandatory information)**

Part Number**

006480