



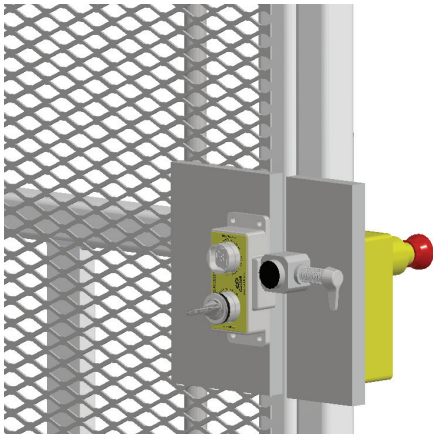
The Gatesafe is an emergency exit device that can be fitted to left and right hand hinged doors and should be used in conjunction with the Castell range of AI/AIE access locks.

It features an emergency stop button that can be depressed to both isolate the power and to allow emergency exit from the area, and the switch contact arrangement of 2N/C 1N/O makes it suitable for safety applications where cross monitoring is required.

The Gatesafe is designed to operate as part of an access control system, a typical example of machine isolation and controlled access is shown below.

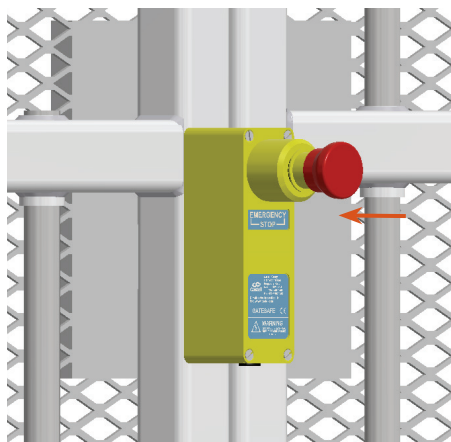
OPERATION

1 Door is locked



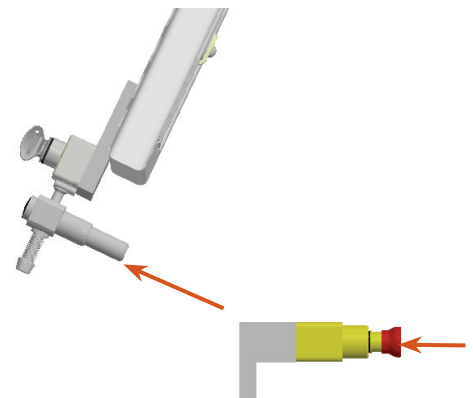
Bolt is in a locked position.

2 Intermediate position



E-stop button is pressed.

3 Door is free.



AIE bolt is released, door can now be opened and switch contacts are changed and can be used to bring machine to a safe condition.

USAGE

The Castell Gatesafe is an emergency exit device that can be fitted to left or right hand hinged doors. It is suitable for full body access areas where there are multiple points of entry. The Gatesafe is designed to be used in conjunction with the Castell bolt access locks, typically the AIE and AI range access locks.

Please note, if Gatesafe is fitted on double doors, one of the doors has to be permanently closed.



No hazardous substances were used in the manufacture of this product.

INSTALLATION



IMPORTANT: The unit must be installed by a competent and qualified person who has read and understood these instructions. Please retain this document.



The Gatesafe unit should be mounted inside the guarded area. The main body is attached to the framework (door jamb) surrounding the door using four suitable screws (see mounting template).



The access lock should be fitted outside the guarded area, the lock is attached to the door using four suitable M6 bolts secured using threadlock set to a torque of 5 N/M. The access lock coded bracket passes through the predrilled hole in the door jamb to interface with the Gatesafe.



The switch contacts provide 2N/C forced break contacts for connection to the safe circuit or safety relay contacts of the machine, and 1N/O contact for connection to the PLC or alarm system.



Switch contacts should be connected by a qualified electrical engineer in accordance with the latest edition of IEE regulations. Refer to contact wiring diagram.



Please contact the manufacturer regarding use in corrosive environments.

MAINTENANCE

Periodic visual checks should be carried out by the site manager / safety officer.



Every 6 months carry out full mechanical & electrical sequence testing. Remove lid & open switch cover to ensure switch contacts are functioning correctly.

TECHNICAL DATA

Retention force	1 kN of load can be applied to the Gatesafe coded bolt
Temperature rating	-25°C (no icing) to +80°C
Weight	1 kg
Material	Aluminium body, stainless steel, coded bolt and internal mechanism
Switch standards	VDE 0660 T100, DIN EN 60947-1, IEC 60947-1 VDD 0660 T200, DIN EN 60947-5-1, IEC 60947-5-1
Switch approvals	cCSAus B300
Switch ratings	400V AC max. 6A AC max. Contacts 2 N/C 1 C/O
Related standards	EN60204, ISO 13850, ISO 12100, ISO 14119
Ingress protection	Switch IP65
Door types	Right hinged gates (hand 1 required), left hinged gates (hand 2 required)
Door frames	Customer to specify thickness when placing order (standard covers 1 mm to 50 mm)
Cable gland	M20
B10d	1,250,000
PL rating	PLd
EU conformity	CE

ELECTRICAL DATA

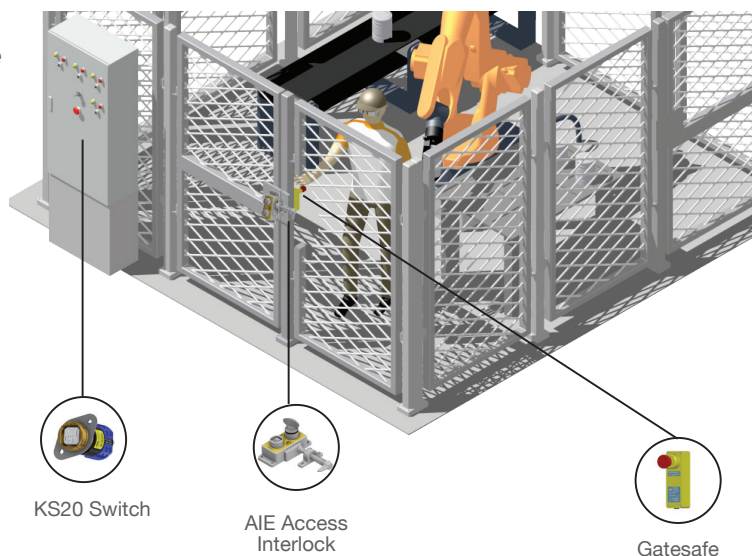
Rated insulation voltage	Ui 250V AC
Conv. thermal current	Ithe 5A
Rated operational voltage	Ue 240V

APPLICATION

The safe access procedure has been followed and an operator is inside the guarded area with the machine switched off.

In the case of an unforeseen event, such as a fire, an alarm, or unexpected machine re-start, the operator may exit the guarded area via the nearest point of egress even if this gate is locked. By pressing the E-stop button on the Gatesafe, the operator can remove power from the machine and release the bolt mechanism allowing safe exit of the area.

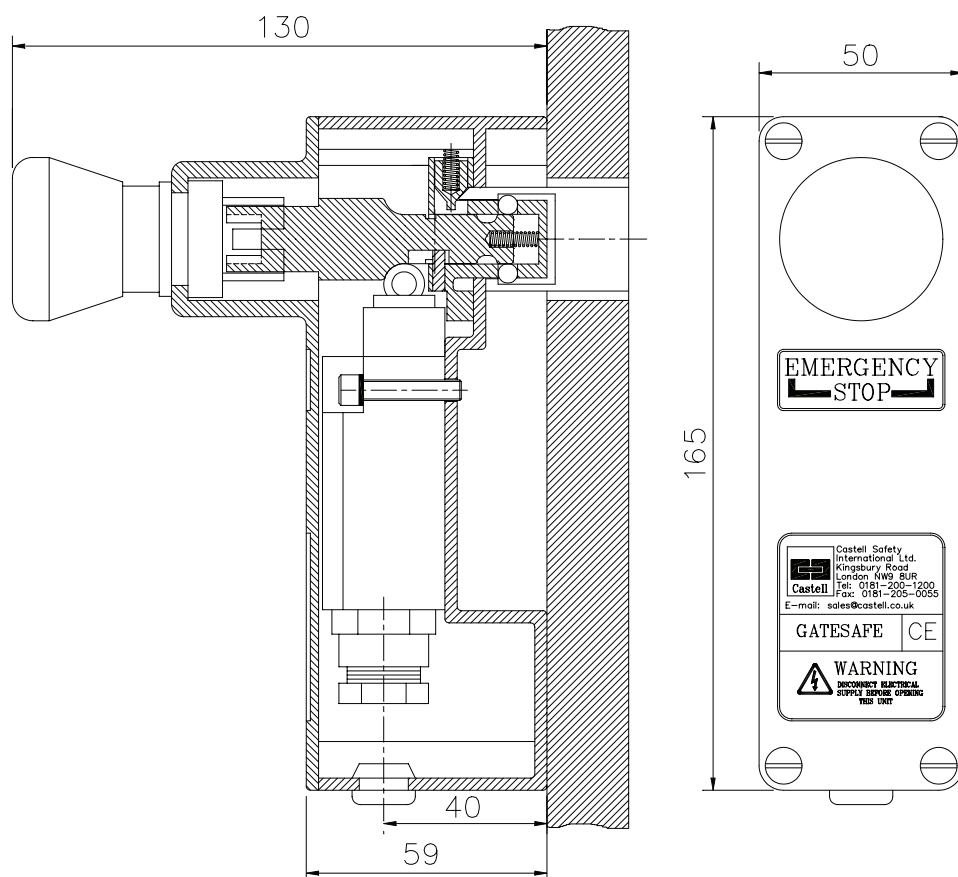
The E-stop button and bolt both need to be reset to allow the machine to start up. The N/O E-stop contact can be used for alarm/signalling.



DRAWING

Dimensions: in mm

Note: For safe mounting, use security screws

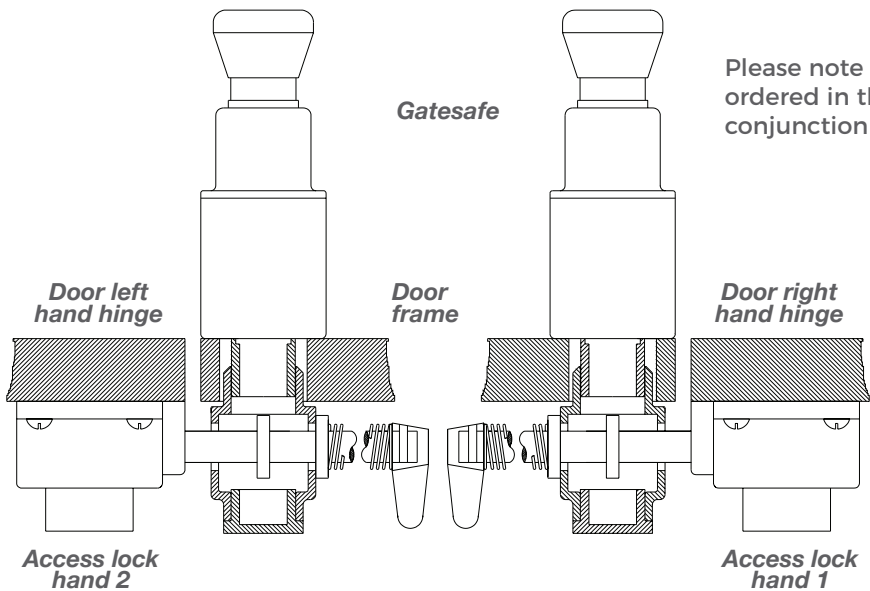


DRAWING

Dimensions: in mm

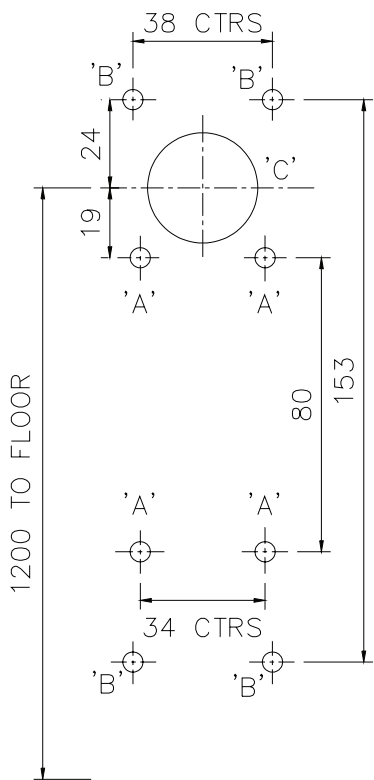
Note: For safe mounting, use security screws

Door Handing



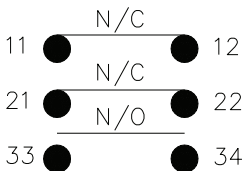
Please note that Access Interlocks are required to be ordered in the opposite handing to normal when used in conjunction with the Gatesafe Device.

Mounting Details



Measure and mark door frame 1200mm (or to local regulations) from the ground & 25mm in from edge of frame as shown. Drill through hole 'C' Ø35mm for coded bolt, hole clearance can be increased to Ø45mm if necessary. The Gatesafe housing can be mounted by either drilling four 'B' through holes 6.5mm dia to utilise four M6 tapped holes in housing or, M5(or equivalent) screws can be driven from inside housing as shown 4 'A' positions. Fixing brackets are available for mesh guards as an extra option.

Switch Contacts



ORDER INFORMATION

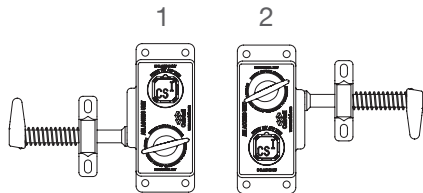
	Component type	1
Part number	Gatesafe	-
Example	Gatesafe	- 40 mm

1	Door frame thickness	Up to 50 mm
---	----------------------	-------------

Note: Also require handing of access interlock being used.

Handing	1 = right hinged door 2 = left hinged door
---------	---

Handing: AIE



CONTACT INFORMATION

Castell Safety

The Castell Building, 217 Kingsbury Road, London, NW9 9PQ UK
t: +44 (0)20 8200 1200 | f: +44 (0)20 8205 0055 | e: sales@castell.com